



Sustainable Environment Enhancement Developments for Schools (SEEDS) Projects

Bond Oversight Committee Meeting
September 4, 2025

Facilities Services Division and Eco-Sustainability Office

Sustainable Environment Enhancement Developments for Schools (SEEDS)

Overview

- SEEDS projects provide outdoor learning spaces in collaboration with school and community led efforts
- The program provides the infrastructure and site work needed, such as asphalt removal, irrigation systems, and soils testing, to make the site “garden ready”
- The school site and/or partner outfits the outdoor learning space with the plant materials and landscaping features that align with the school’s instructional vision and program to move towards 30% green/natural schoolyards
- 116 SEEDS projects have been approved by the Board of Education
 - 80 projects have been completed
 - 4 under construction
 - 32 pending construction start



Lankershim ES



Victoria ES

Sustainable Environment Enhancement Developments for Schools (SEEDS)

Funding

- Originally provided up to \$25,000 to projects
- In 2015, increased to \$35,000
- In 2016, increased to \$100,000
- In 2022, an additional \$50,000 was made available to SEEDS+ schools

Selection Criteria

- Schools are selected by request (schools submit an application)
- LAUSD determines if there is a feasible location and whether there is a greening project or other significant exterior projects planned for the site
- SEEDS+ are those ranked in the top 150 in the LAUSD Greening Index



Sustainable Environment Enhancement Developments for Schools (SEEDS)

Item	Board District	Region	School	Partner Organization	Schoolyard % Green	Project Description	Project Budget ¹	Anticipated Construction Start	Anticipated Construction Completion
1	2	E	Latona ES ²	North East Trees	3.73%	Construct an outdoor learning environment of approximately 2,050 square feet. The project includes the removal of an existing portable building and asphalt, and the addition of new decomposed granite, salvaged log benches and stools, picnic tables with umbrellas, and native planting areas with shade trees and mulch. The project includes a contribution of \$200,000 of Board District Priority funds from Board District 2. The partner organization, North East Trees, will support the project by providing native plants and assisting with planting.	\$300,000	Q4-2026	Q3-2027
2	3	N	Van Nuys ES	School	11.92%	Construct an outdoor learning environment of approximately 1,900 square feet. The project includes the removal of asphalt and the addition of new decomposed granite, salvaged log benches and stools, and native planting areas with shade trees and mulch.	\$100,000	Q4-2026	Q3-2027
3	5	E	San Antonio ES	School	15.34%	Construct an outdoor learning environment of approximately 2,310 square feet. The project includes the addition of raised planter beds, new decomposed granite, salvaged log benches and stools, and native planting areas with shade trees and mulch.	\$100,000	Q4-2026	Q3-2027
4	6	N	Oxnard ES	School	7.79%	Construct an outdoor learning environment of approximately 2,480 square feet. The project includes the removal of asphalt and the addition of new decomposed granite, salvaged log benches and stools, and native planting areas with shade trees and mulch.	\$150,000	Q4-2026	Q3-2027
TOTAL							\$650,000		

¹ Project budget reflects the design services and improvements undertaken by the District. The outfitting and maintenance of the outdoor learning space will be provided by the school site community and/or partner organization.

² The budget for Latona ES includes \$100,000 of SEEDS funds and a contribution of \$200,000 of Board District Priority funds from Board District 2.

Greening Index:

Latona ES Greening Index Rank No. 356

Van Nuys ES Greening Index Rank No. 310

San Antonio ES Greening Index Rank No. 204

Oxnard ES Greening Index Rank No. 104

Latona Elementary School SEEDS Garden Project

Project Scope:

- Construct an outdoor learning environment of approximately 2,050 square feet.
- The project includes the removal of an existing portable building and asphalt, and the addition of new decomposed granite, salvaged log benches and stools, picnic tables with umbrellas, and native planting areas with shade trees and mulch.

Enrollment: 148

Construction Schedule:

Q4-2026 to Q3-2027

Project Budget: \$300,000



Concept – Subject to Change

Van Nuys Elementary School SEEDS Garden Project

Project Scope:

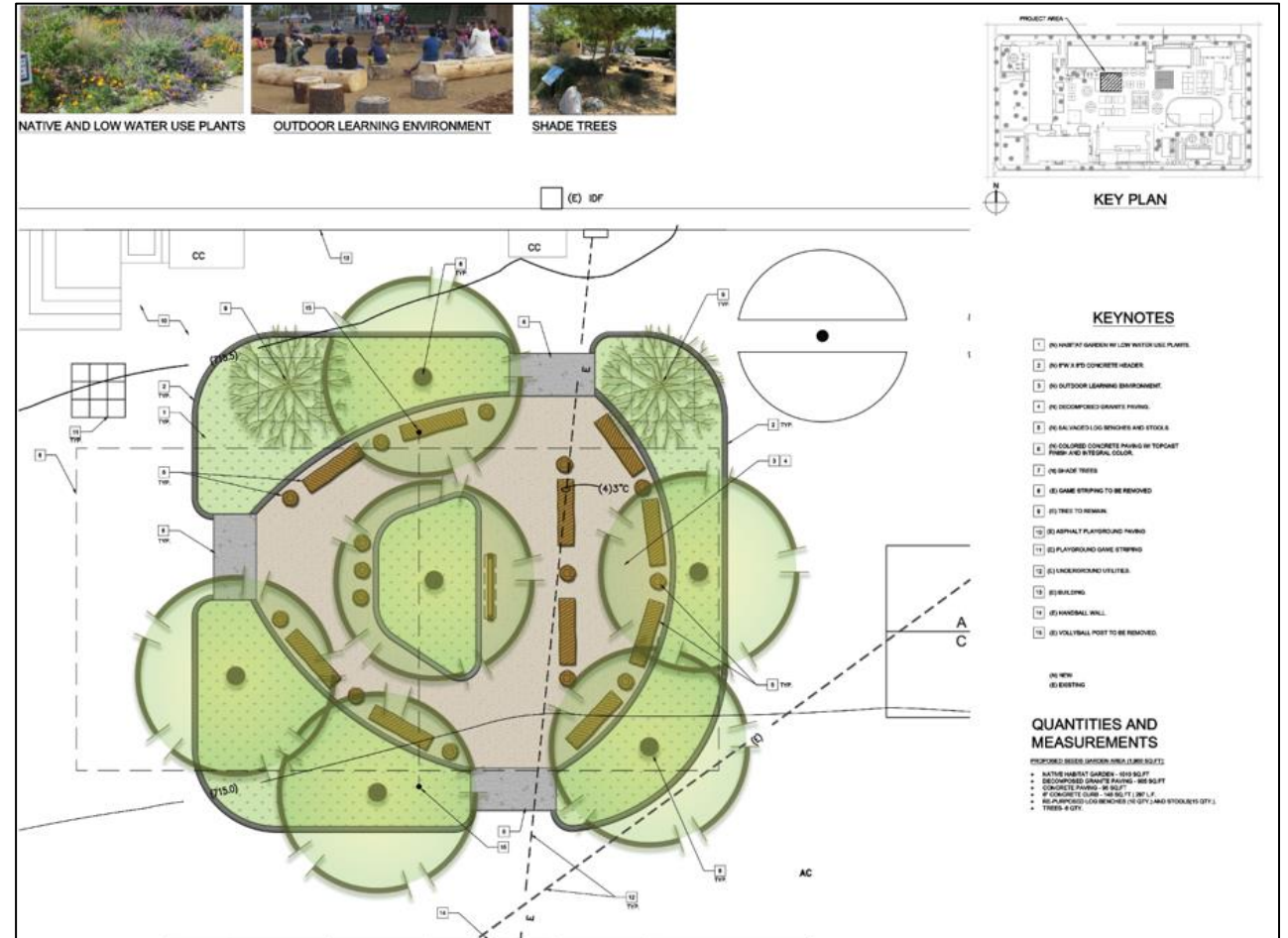
- Construct an outdoor learning environment of approximately 1,900 square feet.
- The project includes the removal of asphalt and the addition of new decomposed granite, salvaged log benches and stools, and native planting areas with shade trees and mulch.

Enrollment: 457

Construction Schedule:

Q4-2026 to Q3-2027

Project Budget: \$100,000



Concept – Subject to Change

San Antonio Elementary School

SEEDS Garden Project

Project Scope:

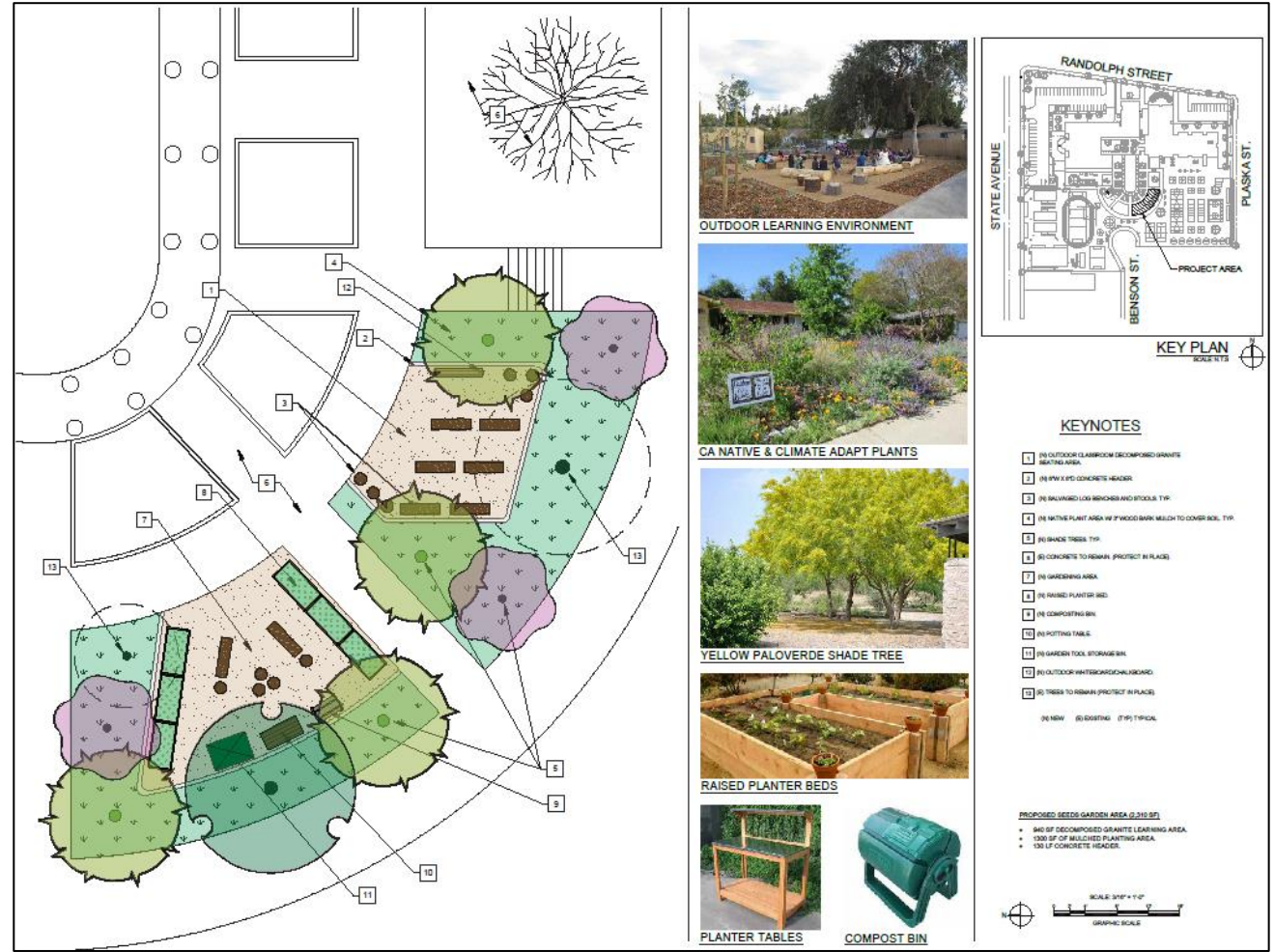
- Construct an outdoor learning environment of approximately 2,310 square feet.
- The project includes the addition of raised planter beds, new decomposed granite, salvaged log benches and stools, and native planting areas with shade trees and mulch.

Enrollment: 425

Construction Schedule:

Q4-2026 to Q3-2027

Project Budget: \$100,000



Concept – Subject to Change

Oxnard Elementary School SEEDS Garden Project

Project Scope:

- Construct an outdoor learning environment of approximately 2,480 square feet.
- The project includes the removal of asphalt and the addition of new decomposed granite, salvaged log benches and stools, and native planting areas with shade trees and mulch.

Enrollment: 299

Construction Schedule:
Q4-2026 to Q3-2027

Project Budget: \$150,000



Concept – Subject to Change

Questions?